

Lafuma[®]

ElectroMagnetic Water Flow Meter



RS485

$\pm 0.3\%$

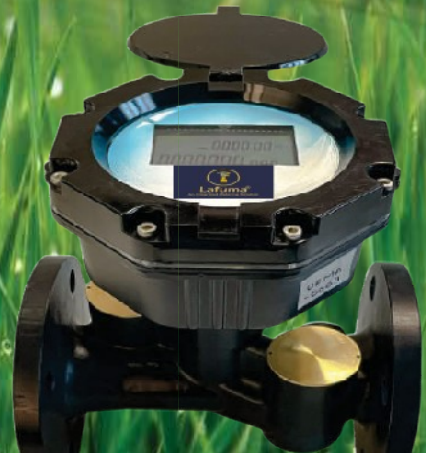
Smart
High
Accuracy

Optional Telemetry
System

Pressure
1~100 Bar
Max.

°C
100

Temperature



ITECHFLOW PVT. LTD

30, Jhotwara Industrial Area, Jaipur, Rajasthan - 302012 (India.)

Lafuma -UFMA-001

Concerned about rising water costs and environmental impact ? Traditional water monitoring systems are slow and clunky. Introducing Lafuma-ITECHFLOW in line ultrasonic flow meter, designed for real-time water management. LAFUMA goes beyond traditional meters by offering a complete water management solution with cutting-edge technology.



- Lafuma-UFMA-001
- Long-Term Stability and Wide Measurement Range.
 - Remote Monitoring, cloud data storage & web based dashboard support through ThingzCloud.
 - LTE (4G) communication for efficient data transmission at user-defined intervals.
 - 5+ Year Battery Life (2D Lithium), @ user defined send intervals, default at 6hrs.
 - Minimal System Pressure Loss.
Log Interval 6 hrs each (Configurable)



Product specification

| | |
|-------------------------|------------------|
| Material | CastIron |
| AvailableSizes | DN25 to DN200 |
| Weight (DN25 to DN200) | 500gms to 28Kgs |
| MountingStyle | Threaded/Flanged |
| Certification Metrology | SO4064:2014 |
| Mounting Style | Horizontal |

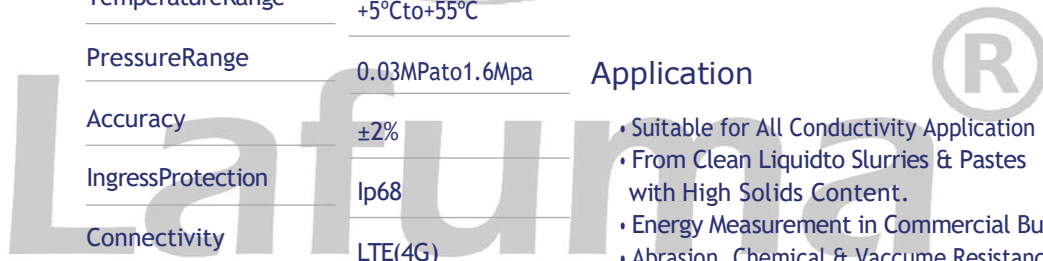
specification

| | | | |
|-------------------------------|-------------------------|------------------------|---|
| Working Principle | Ultrasonic Transit Time | Battery Voltage Output | Li-SOCL2, 3.6V, 38Ah |
| Transducer Resonant Frequency | 1Mhz | Minimumflowrate | 0.15(DN25) to 10(DN200) m ³ /hr (Q1) |
| TemperatureRange | +5°Cto+55°C | Maximumflowrate | 7(DN25)to300(DN400) m ³ /hr(Q3) |

| | |
|-------------------|--|
| PressureRange | 0.03MPato1.6Mpa |
| Accuracy | ±2% |
| IngressProtection | Ip68 |
| Connectivity | LTE(4G) |
| Display | LCD/ 60x40(35) mm |
| EnclosureMaterial | ABS (DN25) Above DN25, diecaste Aluminium |

Application

- Suitable for All Conductivity Application
- From Clean Liquid to Slurries & Pastes with High Solids Content.
- Energy Measurement in Commercial Building
- Abrasion, Chemical & Vacuum Resistance
- Suitable for High Temperature



Lafuma®

Optional Telemetry System



DESIGNED FOR MODERN DATA SECURITY

• Unlike legacy solutions that were designed in a different era and patched over time, Flowline V1.0 is purpose-built to aggregate and process sensor data securely. Cyber threats continuously evolve, and your industrial IoT architecture should as well. Flowline V1.0's architecture ensures always up-to-date cloud software and seamless over-the-air firmware patches for on-premise devices



(10)

More Information
Website www.itechflow.com

ITECHFLOW PVT. LTD

30, Jhotwara Industrial Area, Jaipur, Rajasthan - 302012 (India.)

✉ itechflow1@gmail.com, info@itechflow.com | 🌐 [web. www. itechflow.com](http://web.itechflow.com)

Contact. +91 8851783652, +91 9660249450

